

Leica Geosystems
Metrology Products
Catalog Version 1.1



HEXAGON
METROLOGY



Leica Geosystems
Metrology Products
Catalog Version 1.1

Thank you for ordering a copy of the 2013 Leica Geosystems Metrology Products Catalog. This catalog contains the complete range of products and accessories available for Leica Geosystems Absolute Trackers and Leica Geosystems Industrial Theodolites & Laser Stations. Regardless of your particular application and the Leica Geosystems Metrology Products you use, we have you covered.

All of our products and accessories offer the same top-notch, no-nonsense design and quality you expect from Leica Geosystems.

If you have any questions about our products or accessories, please contact your authorized sales person to receive competent guidance and make an appropriate purchasing decision.

Sincerely,

Your Leica Geosystems Metrology Products Team

8

Leica Absolute Tracker AT901

Leica Absolute Tracker AT901-B
Leica Absolute Tracker AT901-MR
Leica Absolute Tracker AT901-LR
AT Controller 900

10

Portable CMM

Leica T-Probe
Styli and Extensions
Compensation Tools
Power Cables and Battery
Leica T-Mac
Leica T-Cam with Accessories
Leica T-Scan with Accessories

22

Leica Absolute Tracker Accessories

Tracker Stand
Cables and UPS
Remote Control Equipment
Levelling Equipment
Overview Camera Equipment
MeteoStation and Accessories
Measuring Cart and Shipping Container

32

Leica Absolute Tracker AT401

Leica Absolute Tracker AT401
AT Controller 400
Power Supply
Remote Control Equipment
Cables
Tripods and Stands
Tribrachs

40


Reflector

Corner Cube
Tripleprism Reflector
Tape Target Reflector
Special Reflectors and Holders (Leica TDRA6000 only)
Targets for Multiple Theodolite Systems
Compensation and Field Check Tools
Reflector Holders


50

Hubbs

1.5" Reflector Holders
0.5" Reflector Holders
Miscellaneous



60	Industrial Theodolite and Laser Station
	Leica TM6100A Motorized Industrial Theodolite
	Leica TDRA6000 Motorized Industrial Laser Station



62	Industrial Theodolite and Laser Station Accessories
	Additional Options
	Power Supply
	Battery Chargers
	Data Storage and Data Transfer
	Power Cables
	Data Transfer Cables and Converter
	Tripods
	Tribrachs
	Eyepieces, Filters, DL2 Lasers
	Targets
	Autocollimation Accessories
	Cables



74	Leica Geosystems Service Centers
----	---

76	Hexagon Metrology Precision Centers
----	--

Leica Absolute Tracker AT901

576 302

Leica Absolute Tracker AT901-B

Leica Absolute Tracker AT901-Basic with Absolute Interferometer (AIFM working range 80 m), AT Controller 900, AT Quick Release Mount and Shipping Container, PowerLock functionality, emScon on-board compensation and open interface software is included.

576 301

Leica Absolute Tracker AT901-MR

Leica Absolute Tracker AT901-Mid Range with Absolute Interferometer (AIFM) (Interferometer = 25 m, ADM 9 m), AT Controller 900, AT Quick Release Mount and Shipping Container, PowerLock functionality, emScon on-board compensation and open interface software is included. The Leica Absolute Tracker AT901-MR is compatible with Leica T-Cam MR and other Leica T-Products.

576 300

Leica Absolute Tracker AT901-LR

Leica Absolute Tracker AT901-Long Range with Absolute Interferometer (AIFM working range 80 m), AT Controller 900, AT Quick Release Mount and Shipping Container, PowerLock functionality, emScon on-board compensation and open interface software is included. The Leica Absolute Tracker AT901-LR is compatible with Leica T-Cam LR and other Leica T-Products.



Leica Absolute Tracker Controller

AT401	
AT901-B	std.
AT901-MR	std.
AT901-LR	std.
TDRA6000	
TM6100A	

576 310

AT Controller 900

The AT Controller 900 is compatible with all Leica Geosystems Laser Tracker types except Smart310. For older sensor types the ATC900 will support 3D operations (reflector) only. If Leica T-Products support is required for systems other than from the Absolute Tracker AT901 sensor family then please contact service.ims@hexagonmetrology.com



Leica T-Probe



576 169

Leica T-Probe

2nd generation Leica T-Probe is a portable CMM solution for armless and wireless probing. The handy and light weight measurement probe with configurable function buttons allows measurements in small and large measurement volumes with minimal preparation time. The measurement range of the Leica T-Probe is up to 15m in all directions. The Leica T-Probe comes with

- ruby ball stylus d=6mm
- Leica T-Probe Stylus Adaptor
- Stylus Compensation Tool
- 20m Cable
- Power Supply for Battery
- Replacement Battery
- Transportation Case

AT401	opt. opt.
AT901-B	
AT901-MR	
AT901-LR	
TDRA6000	
TM6100A	

Styli & Extensions



576 231

Leica T-Probe Styli Kit

Recommended stylus kit for Leica T-Probe 2nd generation. Comes with 5 different styli:

- Scribe Stylus r=0.1mm - M2
- Ruby Ball Stylus d=3mm - M5
- Ruby Ball Stylus d=6mm - M5
- Ceramic Hemispherical Stylus d=0.5in - M5
- Ceramic Hemispherical Stylus d=1.5in - M5

3 styli extensions:

- 100mm - M5 Carbon Fibre - stem d=20mm
- 200mm - M5 - Carbon Fibre - stem d=20mm
- 40mm - M5 - Carbon - stem d=11mm

2 Leica T-Probe Stylus Adaptors - M5 with precision Quick Release for Self Identification, Stylus Tools for M2-M3/M4/M5 Threaded Styli and Leica T-Probe Styli Kit Case

AT401	opt. opt.
AT901-B	
AT901-MR	
AT901-LR	
TDRA6000	
TM6100A	

AT401	opt. opt.
AT901-B	
AT901-MR	
AT901-LR	
TDRA6000	
TM6100A	

- 576 211 **Leica T-Probe Styli Kit Case**
For standard configuration (empty)



AT401	opt. opt.
AT901-B	
AT901-MR	
AT901-LR	
TDRA6000	
TM6100A	

- 576 212 **Leica T-Probe Stylus Adaptor – M5**
Precision quick release adaptor for Leica T-Probe styli to remove and attach styli without re-calibration. The stylus adaptor has built in intelligence to support stylus self identification



AT401	opt. opt.
AT901-B	
AT901-MR	
AT901-LR	
TDRA6000	
TM6100A	

- 576 403 **Punch Tool – M5**
The Punch Tool is an accessory for the Leica T-Probe, it is a stylus that is used for laying out scribe lines (by punching) on the object for the next following manufacturing process



AT401	opt. opt.
AT901-B	
AT901-MR	
AT901-LR	
TDRA6000	
TM6100A	

- 576 213 **Stylus Extension 100mm - M5**
carbon fibre - stem Ø 20mm
- 576 214 **Stylus Extension 200mm - M5**
carbon fibre - stem Ø 20mm
- 576 215 **Stylus Extension 400mm - M5**
carbon fibre - stem Ø 20mm
- 576 216 **Stylus Extension 600mm - M5**
carbon fibre - stem Ø 20mm





576 217 **Stylus Extension 40mm - M5**
carbon - stem Ø 11mm



576 218 **Stylus Extension 100mm - M5**
carbon - stem Ø 11mm



576 219 **Scribe Stylus - M2**
r=0.1mm



576 220 **Ruby Ball Stylus M5**
Ø 3mm



576 221 **Ruby Ball Stylus M5**
Ø 6mm



576 248 **Cylindrical Stylus - M2** 22.5mm
Ø 3mm

AT401	opt. opt.
AT901-B	
AT901-MR	
AT901-LR	
TDRA6000	
TM6100A	

AT401	opt. opt.
AT901-B	
AT901-MR	
AT901-LR	
TDRA6000	
TM6100A	

AT401	opt. opt.
AT901-B	
AT901-MR	
AT901-LR	
TDRA6000	
TM6100A	

AT401	opt. opt.
AT901-B	
AT901-MR	
AT901-LR	
TDRA6000	
TM6100A	

AT401	opt. opt.
AT901-B	
AT901-MR	
AT901-LR	
TDRA6000	
TM6100A	

AT401	opt. opt.
AT901-B	
AT901-MR	
AT901-LR	
TDRA6000	
TM6100A	

- 576 222 **Edge Stylus - M5**
comes with Edge Sphere 0.5", Magnetic Stylus M5 and Compensation Sphere 0.5"



AT401	opt. opt.
AT901-B	
AT901-MR	
AT901-LR	
TDRA6000	
TM6100A	

- 576 223 **Stylus Tool** for M2 and M3 threaded styli
576 224 **Stylus Tool** for M4 threaded styli
576 225 **Stylus Tool** for M5 threaded styli



AT401	opt. opt.
AT901-B	
AT901-MR	
AT901-LR	
TDRA6000	
TM6100A	

- 576 226 **Stylus Adaptor M5 - M2**



AT401	opt. opt.
AT901-B	
AT901-MR	
AT901-LR	
TDRA6000	
TM6100A	

- 576 227 **Stylus Adaptor M5 - M4**



AT401	opt. opt.
AT901-B	
AT901-MR	
AT901-LR	
TDRA6000	
TM6100A	

- 576 228 **Stylus Adaptor M4 - M5**





576 143 **Ceramic Hemispherical Stylus M5**
Ø 0.5in

AT401
AT901-B
AT901-MR
AT901-LR
TDRA6000
TM6100A

opt.
opt.



576 144 **Ceramic Hemispherical Stylus M5**
Ø 1.5in

575 987 **Magnetic Leica T-Probe Stylus Compensation Kit**
Optional for save positioning on magnetic materials to perform stylus compensations

AT401
AT901-B
AT901-MR
AT901-LR
TDRA6000
TM6100A

opt.
opt.



576 247 **Leica T-Probe Stylus Shank Compensation Tool**
This tool is an accessory for the articles 575 987 Magnetic Leica T-Probe Stylus Compensation Kit and 738 261 Leica T-Probe Stylus Compensation Kit

AT401
AT901-B
AT901-MR
AT901-LR
TDRA6000
TM6100A

opt.
opt.



575 980 **Leica T-Probe Compensation Kit**
For on-site compensation of Leica T-Probe. It comes with Leica T-Probe Reference Frame, Wedge Tool, Tripod Screw and Light Duty Magnetic Holder for 0.5" Red Ring Reflectors. Requires additional 0.5" Red Ring Reflector (corner cube) for compensation process. The Leica T-Probe Compensation Kit fits into the Leica T-Cam Compensation Kit Shipping Container

AT401
AT901-B
AT901-MR
AT901-LR
TDRA6000
TM6100A

opt.
opt.

Power Cables and Battery

AT401	opt. opt.
AT901-B	
AT901-MR	
AT901-LR	
TDRA6000	
TM6100A	

575 972 **Cable Leica T-Probe, 10m**
Reserve or replacement cable 10m for the Leica T-Probe

575 973 **Cable Leica T-Probe, 20m**
Reserve or replacement cable 20m for the Leica T-Probe



AT401	opt. opt.
AT901-B	
AT901-MR	
AT901-LR	
TDRA6000	
TM6100A	

575 983 **Leica T-Probe Replacement Battery**



Leica T-Mac



576 400

Leica T-Mac Basic TMC30-B

The Leica T-Mac Basic is a specific developed sensor using Leica Geosystems' 6DoF technology to extend product offering. Leica T-Mac is designed to be used in combination with robots and large machines especially for positioning with high accuracy. Leica T-Mac has the possibility to mount it on a robot or machine and the housing already has 4 reflector nests included. These reflector positions can be used to establish a local coordinate system for object orientation or robot alignment. As an option a tool exchange interface from Sandvick can be adapted

AT401	opt. opt.
AT901-B	
AT901-MR	
AT901-LR	
TDRA6000	
TM6100A	



576 410

Leica T-Mac Inspect TMC30-I

The Leica T-Mac Inspect is a 6DoF machine control probe for use with the Leica Absolute Tracker AT901 series trackers and Leica T-Cams. The Leica TMC30-I is the deluxe version of the probe for machine positioning, alignment, calibration and all inspection tasks (such as touch trigger or scanning). The Leica TMC30-I includes: Factory Parameter CD, User Manuals, Red Transportation Case and 20m Basic Interface Cable. Leica T-Mac Inspect Cable must be ordered separately

AT401	opt. opt.
AT901-B	
AT901-MR	
AT901-LR	
TDRA6000	
TM6100A	

576 404

Leica T-Mac Upgrade Kit Basic to Inspect

This kit allows older Leica T-Macs to be upgraded in order to be used in new inspection systems. The upgrade kit only contains the internal hardware to convert a Leica T-Mac TMC30 to a Leica T-Mac TMC30-I, no additional cables or interfaces are included.

- Please contact service to make sure that the existing Leica T-Mac is capable of receiving this upgrade
- Leica T-Mac Inspect Cable must be ordered separately

AT401	opt. opt.
AT901-B	
AT901-MR	
AT901-LR	
TDRA6000	
TM6100A	

AT401	opt. opt.
AT901-B	
AT901-MR	
AT901-LR	
TDRA6000	
TM6100A	

- 576 406 **Automation Interface Controller**
The Automation Interface Controller handles all of the switching for an automated machine control/inspection systems including multiple trackers, multiple probe devices and machine controller Digital I/O) interfaces. Includes: Product CD, Power Cables and 5m LAN Cable



AT401	opt. opt.
AT901-B	
AT901-MR	
AT901-LR	
TDRA6000	
TM6100A	

- 576 407 **Automation Multiplex Box**
The Automation Multiplex (MUX) Box allows on machine switching between the Leica TMC30-I and a Leica T-Scan for inspection purposes. Includes: 45m MUX-Interface Cable (between the MUX Box and Automation Interface Box) and 1m Laser Controller Cable



AT401	opt. opt.
AT901-B	
AT901-MR	
AT901-LR	
TDRA6000	
TM6100A	

- 6004 501 **TESA Touch Trigger Set for Leica T-Mac Inspect**
allow the Leica T-Mac TMC30-I to be used for touch trigger inspection. Includes: TESASTAR-rp probe head with Leica T-Mac Interface, 100mm Probe Extension, 5mm Ruby Styli, Calibration Sphere and accessories. – For use in an automated setup an additional Automation Interface Box and required cables must be ordered as well



AT401	opt. opt.
AT901-B	
AT901-MR	
AT901-LR	
TDRA6000	
TM6100A	

- 576 509 **Leica T-Mac Inspect TMC30-I Cable, 10m**
for connecting the Leica T-Mac Inspect TMC30-I to the Automation Interface Box or MUX box directly



- 576 510 **Leica T-Mac Inspect TMC30-I Cable, 30m**
for connecting the Leica T-Mac Inspect TMC30-I to the Automation Interface Box or MUX box directly



576 507 **Trigger Cable, 2m**
for connecting the Automation Interface Box to
the Laser Tracker Controller (ATC900)

AT401	opt. opt.
AT901-B	
AT901-MR	
AT901-LR	
TDRA6000	
TM6100A	



576 508 **Trigger Cable, 25m**
for connecting the Automation Interface Box to
the Laser Tracker Controller (ATC900)

AT401	opt. opt.
AT901-B	
AT901-MR	
AT901-LR	
TDRA6000	
TM6100A	



576 505 **Automation Robot Cable, 20m**
for connecting the Automation Interface Box to
the robotic or NC machine controller

AT401	opt. opt.
AT901-B	
AT901-MR	
AT901-LR	
TDRA6000	
TM6100A	

576 506 **Automation Robot Cable, 50m**
for connecting the Automation Interface Box to
the robotic or NC machine controller

Leica T-Cam with Accessories

AT401	opt.
AT901-B	
AT901-MR	
AT901-LR	
TDRA6000	
TM6100A	

576 321

Leica T-Cam MR

Leica T-Cam Mid Range for up to 9m measurement range. It comes with transportation case and cleaning set. Compatible with Leica Absolute Tracker AT901-MR and Leica LTD700/709

AT401	opt.
AT901-B	
AT901-MR	
AT901-LR	
TDRA6000	
TM6100A	

576 320

Leica T-Cam LR

Leica T-Cam Long Range for up to 15 meter measurement range. It comes with transportation case and cleaning set. Compatible with Leica Absolute Tracker AT901-LR and Leica LTD800/840



AT401	opt. opt.
AT901-B	
AT901-MR	
AT901-LR	
TDRA6000	
TM6100A	

575 979

Leica T-Cam Compensation Kit

for on-site compensation of Leica T-Cam to Tracker. Requires additional 0.5" Red-Ring Reflector (corner cube) for compensation process. It is recommended to have at least one Compensation Kit per factory



AT401	opt. opt.
AT901-B	
AT901-MR	
AT901-LR	
TDRA6000	
TM6100A	

575 975

Overview Camera for Leica T-Cam

Optional black and white overview camera that can be mounted to Leica T-Cam. It enables a safe and convenient reflector lock via video image. The functionality of the camera is supported during the various measurement modes of the Leica Geosystems Laser Tracker, which is equipped with an Absolute Distance Meter (ADM)



Leica T-Scan with Accessories



576 383

Leica T-Scan TS50-A

Laser Scanner complete

- Sensor head with integrated reflectors, handle and cable
- Transportation box
- Scanner-calibration-files (CD-ROM)
- Scanner certificate
- Leica T-Scan controller unit
- Leica T-Scan interface kit
- Trigger cable (LTC plus to T-Scan Controller)
- Leica T-Scan Cable (rack to LTC plus [Probe])
- Sub-D Cable (9-pin, 2 m)
- Cross over ethernet Cable 2 x 1 m
- Leica T-Scan holder set
- Vertical holder with shield
- Horizontal Holder including Instant Temperature Compensation Kit
- SW T-Scan Collect
- Data collection, 3D online visualization of measurements
- Display of points, meshes or shaded meshes
- Import and export 3D-data (points, STL)
- Alignments of coordinate systems, 3D-filter Toolset, advanced cloud editing functions
- Global surface matching of point clouds
- Meshing tool
- Data post processing (programmable)
- Profile calculation
- Menu to verify accuracy, menu for calibration
- Optional visualization of hand scanner

AT401
AT901-B
AT901-MR
AT901-LR
TDRA6000
TM6100A

opt.
opt.

AT401	
AT901-B	
AT901-MR	opt.
AT901-LR	opt.
TDRA6000	
TM6100A	

- 576 385 **Leica T-Scan High-Speed Computer**
for fast data collection, powerful visualization and post processing.
- 12GB RAM
 - Core i7 940, 2.93GHz processor
 - Quadro FX 1700 graphics card / 512MB
- (Please note: keyboard, monitor, speakers and mouse need to be purchased locally)



AT401	
AT901-B	
AT901-MR	opt.
AT901-LR	opt.
TDRA6000	
TM6100A	

- 576 386 **Leica T-Scan High-Speed Laptop**
Mobile solution for fast data collection, powerful visualization and post processing.
- 8 GB RAM
 - QuadCore QX9300, 2.53GHz processor
 - Nvidia Quadro FX3700M / 1 GB



AT401	
AT901-B	
AT901-MR	opt.
AT901-LR	opt.
TDRA6000	
TM6100A	

- 576 047 **Reference Sphere with Certificate Ø 100mm**
Reference Sphere with 100mm diameter for field check and alignment checks of the Leica T-Scan system



AT401	
AT901-B	
AT901-MR	opt.
AT901-LR	opt.
TDRA6000	
TM6100A	

- 576 046 **Leica T-Scan Measuring Cart (rack-size)**
Small 19" rack with wheels, 18 HE height to mount:
- LTC plus, Cover plate for cable connection, Laser power supply, Leica T-Scan Controller, High Speed Computer and UPS.
- L=0,755m, W=0,59m, H=0,845m





Tracker Stand

576 337

AT Stand Extension

Base Stand Extension for Leica Absolute Tracker. The AT Stand Extension does not include 576 338 AT Quick Release Mount, which is already integrated with any Leica Absolute Tracker AT901. The AT Stand Extension can be extended either with 575 998 Stand Extension, 380mm (15") or 575 999 Stand Extension, 180mm (7")

AT401	opt.
AT901-B	opt.
AT901-MR	opt.
AT901-LR	opt.
TDRA6000	
TM6100A	

575 997

Leica Tracker Stand

The Leica Tracker Stand is equipped with three levelling screws and shock absorbing wheels

AT401	opt.
AT901-B	opt.
AT901-MR	opt.
AT901-LR	opt.
TDRA6000	
TM6100A	

576 349

Aluminum Tripod AT08

for easy demos, increased portability and reduction of total system weight. Aluminum Tripod for Leica Absolute Tracker with 3.5" x 8 thread interface. The tripod interface is compatible with 576 338 AT Quick Release Mount. Tripod height (working position): 815mm (fix) Tilting axis height: 1430mm Dimensions: 25 x 25 x 100cm (folded) Weight: 10kg (without AT Quick Release Mount) Special feature: cable fixation Note: For best stability and accuracy it is still recommended to use the standard Tracker Stand and Stand Extension

AT401	opt.
AT901-B	opt.
AT901-MR	opt.
AT901-LR	opt.
TDRA6000	opt.
TM6100A	opt.

AT401
AT901-B
AT901-MR
AT901-LR
TDRA6000
TM6100A

opt.
opt.
opt.

576 338

AT Quick Release Mount

AT Quick Release for mounting a Leica Absolute Tracker on 576 337 AT Stand Extension, 576 336 AT Mounting Plate or any other compatible instrument stand with 3.5" x 8 thread adapter



AT401
AT901-B
AT901-MR
AT901-LR
TDRA6000
TM6100A

opt.
opt.
opt.

576 341

AT Horizontal Mount

The AT Horizontal Mount is designed for the Leica Leica Absolute Tracker AT901 Laser Tracker to provide a vertical range of 360°. The AT Horizontal Mount can be adjusted and locked with a "pin" to 6 positions between 0° - 90° degrees. It can be fixed on the AT Stand Extension, Leica Tracker Stand, AT Magnetic Mount, and AT Mounting Plate (or any other compatible instrument stand with 3.5" x 8 thread adapter). An AT Quick Release is part of the mount.

Note: An alignment in horizontal position is recommended to get best possible 3D accuracy. (Not to be used with Leica T-Cam)



AT401
AT901-B
AT901-MR
AT901-LR
TDRA6000
TM6100A

opt.
opt.
opt.

576 336

AT Mounting Plate

allows to mount the Leica Absolute Tracker onto machine beds. The AT Mounting Plate does not include 576 338 AT Quick Release Mount which is required



AT401
AT901-B
AT901-MR
AT901-LR
TDRA6000
TM6100A

opt.
opt.
opt.

576 339

AT Magnetic Mount

allows to mount the Leica Absolute Tracker onto a magnetic surface. The AT Magnetic Mount does not include 576 338 AT Quick Release Mount and 576 336 AT Mounting Plate, which is required



Cables and UPS



- 576 330
- Motor Cable for Leica Laser Tracker, 10m (33')**
compatible with any Leica Geosystems Laser Tracker type (except Leica AT401)
- 576 332
- Motor Cable for Leica Laser Tracker, 5m (16')**
compatible with any Leica Geosystems Laser Tracker type (except Leica AT401)
- 576 331
- Sensor Cable for Leica Laser Tracker, 10m (33')**
compatible with any Leica Geosystems Laser Tracker type (except Leica AT401)
- 576 333
- Sensor Cable for Leica Laser Tracker, 5m (16')**
compatible with any Leica Geosystems Laser Tracker type (except Leica AT401)

AT401	
AT901-B	opt.
AT901-MR	opt.
AT901-LR	opt.
TDRA6000	
TM6100A	



- 575 256
- Elbow Plug Set**
for Motor- and Sensor Cable, comprising:
- 575 247
- Elbow Plug**, for Motor Cable, 16 pin
- 575 248
- Elbow Plug**, for Sensor Cable, 54 pin

AT401	
AT901-B	opt.
AT901-MR	opt.
AT901-LR	opt.
TDRA6000	
TM6100A	



- 575 899
- LAN Cable RJ-45, 5m**
LAN cable to connect Laser Tracker with application computer

AT401	opt.
AT901-B	opt.
AT901-MR	opt.
AT901-LR	opt.
TDRA6000	
TM6100A	



- 575 992
- Uninterrupted Power Supply UPS (220 Volt)**
Power VA / W: 1100 / 700, Input voltage tolerance: 160V / 294V adjustable to 150V / 294V via supplied UPS-driver software, Frequency: 50 / 60 HZ auto-select, Output voltage on battery power: 230V (adjustable to 200 / 220 / 240V via supplied UPS-driver software, Dimensions: 44x438x499 mm, Weight: 16 kg

AT401	
AT901-B	opt.
AT901-MR	opt.
AT901-LR	opt.
TDRA6000	
TM6100A	

AT401	
AT901-B	opt.
AT901-MR	opt.
AT901-LR	opt.
TDRA6000	
TM6100A	

575 993 **Uninterrupted Power Supply UPS (110 Volt)**
Power VA / W: 1100 / 700, Input voltage tolerance: 92V / 138V adjustable to 80V / 153V via supplied UPS-driver software, Frequency: 50 / 60 HZ auto-select, Output voltage on battery power: 120V (adjustable to 100 / 120 / 127V vial supplied UPS-driver software, Dimensions: 1.73x17.2x19.6 inch
Weight: 35.2 lb



Remote Control Equipment

AT401	opt.
AT901-B	opt.
AT901-MR	opt.
AT901-LR	opt.
TDRA6000	opt.
TM6100A	opt.

575 757 **Wireless RF Control**
Wireless Radio Frequency Remote Control (2.4GHz), 4 custom programmable buttons, up to 45m/150ft range, USB interface, compatible with Windows XP or higher (32bit/64bit)



AT401	
AT901-B	opt.
AT901-MR	opt.
AT901-LR	opt.
TDRA6000	
TM6100A	

575 965 **Wireless IR Control**
Receiver and infrared Remote Control. Set with Product CD



Levelling Equipment



576 000

NIVEL230
Inclination sensor for Laser Tracker with RS232 interface. Supports gravity based coordinate measurements, with Producer Inspection Certificate M NIVEL230

AT401	
AT901-B	opt.
AT901-MR	opt.
AT901-LR	opt.
TDRA6000	
TM6100A	



576 334

AT NIVEL Adapter Kit
The AT NIVEL Adapter Kit is used to mount a 576 000 NIVEL 230 inclination sensor onto the Leica Absolute Tracker AT901 to determine the tilt components and to monitor the station

AT401	
AT901-B	opt.
AT901-MR	opt.
AT901-LR	opt.
TDRA6000	
TM6100A	



802 905

Cable, 1.5m (Lemo - Lemo)
to connect Laser Tracker with NIVEL20 or NIVEL230

AT401	
AT901-B	opt.
AT901-MR	opt.
AT901-LR	opt.
TDRA6000	
TM6100A	

Overview Camera Equipment

AT401	
AT901-B	opt.
AT901-MR	opt.
AT901-LR	opt.
TDRA6000	
TM6100A	

575 986

Overview Camera for Laser Tracker

The optional black/white overview camera mounts on top of the Laser Tracker. It enables save and convenient reflector lock via video image. The camera functionality is supported during the various measuring modes of Leica Absolute Tracker AT901-LR, Leica Absolute Tracker AT901-MR, Leica Absolute Tracker AT901-B, Leica LTD840, Leica LTD706, Leica LTD709, Leica LTD640 Laser Tracker, which has the Absolute Distance Meter built in.



MeteoStation and Accessories

AT401	
AT901-B	opt.
AT901-MR	opt.
AT901-LR	opt.
TDRA6000	
TM6100A	

576 342

AT MeteoStation

The AT MeteoStation has a built-in temperature, humidity and pressure measuring unit. Two External Temperature Sensors (air temperature/object temperature) can be attached optionally. The MeteoStation gets connected to the AT Controller via a USB Cable. The meteo data is accessible via the emScon interface. The product consists of: AT MeteoStation, 3m USB Cable, External NTC Temperature Sensor (2m), HW manual and Producer Certificate.

Parameters

Pressure: min. 500hPa, max. 1100hPa
 Temperature (int. and ext.): min. -10°C, max.+60°C
 Rel. Humidity: min. 0%, max. 95%

Accuracy

Pressure: ± 1.0 hPa
 Temperature (int. and ext.): ± 0.3 °C
 Humidity: $\pm 5\%$





576 350

External NTC Temperature Sensor S2, 2m
The External NTC Temperature Sensor S2 is an accessory for the Leica Absolute Tracker AT401 and the standalone AT MeteoStation (576 342). The temperature sensor is configured with a 2m cable and its tip is square shaped by 8x8x40mm with a borehole \varnothing 4.2mm to fix it to the object. It can be used as an air- and/or object-sensor.
Parameter: Temperature range: -20 – +50°C
Accuracy: Temperature: \pm 0.2°C

AT401	opt.
AT901-B	opt.
AT901-MR	opt.
AT901-LR	opt.
TDRA6000	
TM6100A	



576 351

External NTC Temperature Sensor S2, 10m
The External NTC Temperature Sensor S2 is an accessory for the Leica Absolute Tracker AT401 and the standalone AT MeteoStation (576 342). The temperature sensor is configured with a 10m cable and its tip is square shaped by 8x8x40mm with a borehole \varnothing 4.2mm to fix it to the object. It can be used as an air- and/or object-sensor.
Parameter: Temperature range: -20 – +50°C
Accuracy: Temperature: \pm 0.2°C

AT401	opt.
AT901-B	opt.
AT901-MR	opt.
AT901-LR	opt.
TDRA6000	
TM6100A	



576 345

USB Cable, 3m
The USB Cable connects the AT MeteoStation with the AT Controller unit

AT401	
AT901-B	opt.
AT901-MR	opt.
AT901-LR	opt.
TDRA6000	
TM6100A	

Measuring Cart and Shipping Container

Both carts and shipping container will provide best stowage and transport facilities – no matter where the equipment need to travel to

AT401
AT901-B
AT901-MR
AT901-LR
TDRA6000
TM6100A

opt.
opt.
opt.

576 181

Metrology Measurement Cart

contains a shock absorbing 19" rack mounting for installation of controllers, UPS, and High Speed Computer. The rack mounting compartment is temperature regulated (build-in fan). The cart can be used like a regular measuring cart and in addition it can be reconfigured to a shuttle cart. The drawers are equipped with preconfigured foam inlays for storing accessories like reflectors, reflector supports, Meteo-Stations, Leica T-Probe styli and extensions... The main cart desktop can be extended with a foldable side-table.

L=1.20m, W=0.70m, H=1.10m



AT401
AT901-B
AT901-MR
AT901-LR
TDRA6000
TM6100A

opt.
opt.

576 046

Leica T-Scan Measuring Cart (rack-size)

Small 19" rack with wheels, 18 HE height to mount:

LTC plus, Cover plate for cable connection, Leica T-Scan Controller "All-in-One", High Speed Computer and UPS.

L=0,755m, W=0,59m, H=0,845m





576 335

Shipping Case for Stand and AT Stand Extension
The case can be equipped with 575 997 Leica Tracker Stand, 576 337 Leica AT Stand Extension and the Leica Laser Tracker Motor- & Sensor-Cables (5m or 10m)

AT401	
AT901-B	opt.
AT901-MR	opt.
AT901-LR	opt.
TDRA6000	
TM6100A	



576 348

Rack Mount Light Duty Case
The case is a light duty rolling rack unit. It has dual lids and rollerblade type wheels. The rack mount light duty case is versatile and can be equipped with e.g. a Leica AT Controller 900 or Leica T-Scan Controller or any other computer equipment, which fits the 4 unit height and 19" width rack system

AT401	
AT901-B	opt.
AT901-MR	opt.
AT901-LR	opt.
TDRA6000	
TM6100A	

- Exterior depth: 57.785 cm (22.75 in)
- Exterior width: 54.610 cm (21.50 in)
- Exterior height: 27.305 cm (10.75 in)
- Rack space units: 4 U
- Rack depth (rail to lid): 48.260 cm (19.00 in)
- Rack depth (rail to rail): 42.545 cm (16.75 in)
- Lid depth: 5.715 cm (2.25 in)
- Weight: 7.711 kg (17 lb)

Leica Absolute Tracker AT401

576 371

Leica Absolute Tracker AT401

including:

- Leica AT401 sensor
- AT Controller 400
- AT401 Sensor Cable
- External NTC Temperature Sensor
- Tribrach
- IR Remote Control
- LAN Cable
- ATC400 Tripod Fixture
- 2 Batteries
- Battery Charger
- AC Adapter
- Producer Inspection Certificate M
- Compensation SW
- Transportation Box



Controller

AT401	opt.
AT901-B	
AT901-MR	
AT901-LR	
TDRA6000	
TM6100A	

576 370

AT Controller 400

The AT Laser Tracker Controller 400 unit is used with the Leica Absolute Tracker AT401



AT401	opt.
AT901-B	
AT901-MR	
AT901-LR	
TDRA6000	
TM6100A	

576 375

ATC400 Tripod Fixture

The ATC400 Tripod Fixture is used to mount the AT Controller 400 unit on a stand like Aluminum Tripod ATxx, Brunson etc.



Power Supply



754 834 **GEB241 Battery**
Internal Li-Ion battery, 14.8V, 4800mAh

AT401	opt.
AT901-B	
AT901-MR	
AT901-LR	
TDRA6000	opt.
TM6100A	opt.



576 378 **GKL212, Basic Charger Set**
2 basic chargers for Li-Ion Batteries GEB241, daisy chain cable, car adapter cable and AC adapter included

AT401	opt.
AT901-B	
AT901-MR	
AT901-LR	
TDRA6000	opt.
TM6100A	opt.



733 271 **GKL221, Charger PRO**
To be used with up to two charging adapters GDI221 or GDI222, Charger Cable and Net Adapter included

AT401	opt.
AT901-B	
AT901-MR	
AT901-LR	
TDRA6000	opt.
TM6100A	opt.



733 323 **GDI221, Adapter for GKL221**
for charging Li-Ion Batteries of type GEB241

AT401	opt.
AT901-B	
AT901-MR	
AT901-LR	
TDRA6000	opt.
TM6100A	opt.



576 377 **AT401 PoE+ Set**
The PoE+ Set configuration provides electrical power, along with data, from the PC to the Leica Absolute Tracker AT401 over standard category 5m cable in an ethernet network. Content: PoE+ midspan, PoE+ module, 5m ethernet cable

AT401	opt.
AT901-B	
AT901-MR	
AT901-LR	
TDRA6000	
TM6100A	

Remote Control Equipment

AT401	opt.
AT901-B	
AT901-MR	
AT901-LR	
TDRA6000	
TM6100A	

576 379 **AT Remote Control 400**
The wireless infra-red control unit is compatible with Leica Absolute Tracker AT401 and ATC400.
Content: Remote Control unit, 2 AAA-batteries



AT401	opt.
AT901-B	opt.
AT901-MR	opt.
AT901-LR	opt.
TDRA6000	opt.
TM6100A	opt.

575 757 **Wireless RF Control**
Wireless Radio Frequency Remote Control (2.4GHz), 4 custom programmable buttons, up to 45m/150ft Range, USB interface, compatible with Windows XP or higher (32bit/64bit)



Cables



576 376 **AT401 Sensor Cable, 1.8m**
compatible with Leica Absolute Tracker AT401
and ATC400

AT401	opt.
AT901-B	
AT901-MR	
AT901-LR	
TDRA6000	
TM6100A	



576 350 **External NTC Temperature Sensor S2, 2m**
The External NTC Temperature Sensor S2 is an
accessory for the Leica Absolute Tracker AT401
and the standalone AT MeteoStation (576
342). The temperature sensor is configured
with a 2m cable and its tip is square shaped
by 8x8x40mm with a borehole \varnothing 4.2mm to fix it
to the object. It can be used as an air- and/or
object- sensor.
Parameter: Temperature range: -20 – +50°C
Accuracy: Temperature: \pm 0.2°C

AT401	opt.
AT901-B	opt.
AT901-MR	opt.
AT901-LR	opt.
TDRA6000	
TM6100A	



576 351 **External NTC Temperature Sensor S2, 10m**
The External NTC Temperature Sensor S2 is an
accessory for the Leica Absolute Tracker AT401
and the standalone AT MeteoStation (576 342).
The temperature sensor is configured with
a 10m cable and its tip is square shaped by
8x8x40mm with a borehole \varnothing 4.2mm to fix it
to the object. It can be used as an air- and/or
object-sensor.
Parameter: Temperature range: -20 – +50°C
Accuracy: Temperature: \pm 0.2°C

AT401	opt.
AT901-B	opt.
AT901-MR	opt.
AT901-LR	opt.
TDRA6000	
TM6100A	



575 899 **LAN Cable RJ-45, 5m**
LAN Cable to connect Laser Tracker with ap-
plication computer

AT401	opt.
AT901-B	
AT901-MR	
AT901-LR	
TDRA6000	
TM6100A	

Tripods and Stands

AT401	opt.
AT901-B	
AT901-MR	
AT901-LR	
TDRA6000	opt.
TM6100A	opt.

575 483 **AT21 Aluminium Tripod**
Robust, well-established tripod for general use and 5/8" thread. Suitable for Laser Stations, Theodolites and Laser Tracker field check equipment. Instrument height: from 1.4 – 2.1 m (4.6 – 6.9 ft)Weight: 11kg (24.2 lb)



AT401	opt.
AT901-B	
AT901-MR	
AT901-LR	
TDRA6000	opt.
TM6100A	opt.

575 484 **AT28 Aluminium Tripod**
with adjustable centre column. Robust, well-established tripod for general use and 5/8" thread. Suitable for Laser Stations, Theodolites and Laser Tracker field check equipment. Instrument height: from 1.4 – 2.8m (4.6 – 9.2 ft) Weight: 12kg (26.4 lb)



AT401	opt.
AT901-B	opt.
AT901-MR	opt.
AT901-LR	opt.
TDRA6000	opt.
TM6100A	opt.

576 349 **AT08 Aluminum Tripod**
for easy demos, increased portability and reduction of total system weight. Aluminum Tripod for AT Laser Tracker with 3.5"x8 thread interface.
The tripod interface is compatible with 576 338 AT Quick Release Mount.
Tripod height (working position): 815mm (fix)
Tilting axis height: 1430mm
Dimensions: 25x25x100cm (folded)
Weight: 10kg (without AT Quick Release Mount)
Special feature: cable fixation
Note: For best stability and accuracy it is still recommended to use the standard tracker stand and stand extension



AT401	opt.
AT901-B	
AT901-MR	
AT901-LR	
TDRA6000	opt.
TM6100A	opt.

577 261 **3½" x 8" to 5/8" x 11" Adapter**
To mount a TPS or AT401 sensor on a heavy duty "Brunson" type stand

Please send orders for Art. 577 261 to:
Hubbs Machine & Manufacturing Inc., 6282 Rocky Grove, P.O. Box 540, Cedar Hill, Missouri 63016-0540, USA, Phone +1 636 285 43 88, Fax +1 636 285 59 70, tonya@hubbsmachine.com





576 354

AT401 Stand Adapter

fits on the AT Stand Extension (576 337) from the Leica Absolute Tracker AT901. The Stand Adapter is designed in such way, that the tilting axis of the Leica Absolute Tracker AT401 is at the same height as the Leica Absolute Tracker AT901 when used on the AT Stand Extension

AT401	opt.
AT901-B	
AT901-MR	
AT901-LR	
TDRA6000	
TM6100A	



296 632

GST20 Tripod, Telescopic, with Accessories

Robust, well-established tripod for general use. Suitable for levels, lasers, Laser Stations and GPS. Extendible 180cm (5.9ft)
Weight: 6.4kg (14.1lb)

AT401	opt.
AT901-B	
AT901-MR	
AT901-LR	
TDRA6000	opt.
TM6100A	opt.



332 200

GST4 Tripod Base

for setting up GST Tripods on smooth surfaces

AT401	opt.
AT901-B	
AT901-MR	
AT901-LR	
TDRA6000	opt.
TM6100A	opt.

Tribrachs

AT401	opt.
AT901-B	
AT901-MR	
AT901-LR	
TDRA6000	opt.
TM6100A	opt.

575 459 **GDF21-I Industrial Tribrach**
without optical plummet, light grey



AT401	opt.
AT901-B	
AT901-MR	
AT901-LR	
TDRA6000	opt.
TM6100A	opt.

575 733 **GDF22-I Industrial Tribrach**
with optical, plummet, light grey





Corner Cube

575 784

Red-Ring Reflector (RRR) 1.5"
ball with hardened steel surface

Corner cube reflector with removable ring,
protection cover for optic and certificate, in
wooden box

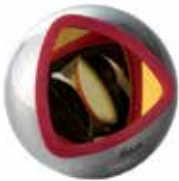
AT401	opt.
AT901-B	opt.
AT901-MR	opt.
AT901-LR	opt.
TDRA6000	opt.
TM6100A	

575 739

Red-Ring Reflector (RRR) 0.5"
ball with hardened steel surface

Corner cube reflector with removable ring,
protection cover for optic and certificate, in
wooden box

AT401	
AT901-B	opt.
AT901-MR	opt.
AT901-LR	opt.
TDRA6000	
TM6100A	



576 244

Break Resistant Reflector 1.5" (BRR)

Break Resistant Reflector with collar,
protection cover for optic and certificate,
in wooden box

Material ball: Stainless steel,
surface-hardened, magnetic

AT401	opt.
AT901-B	opt.
AT901-MR	opt.
AT901-LR	opt.
TDRA6000	opt.
TM6100A	

Tripleprism Reflector

AT401	opt.
AT901-B	opt.
AT901-MR	opt.
AT901-LR	opt.
TDRA6000	
TM6100A	

576 234 **Tooling Ball Reflector 0.5" (TBR)**
Tooling ball glass prism reflector with
removable ring, protection cover for
optic and certificate, in wooden box
Material ball: Stainless steel,
surface-hardened, magnetic



AT401	opt.
AT901-B	opt.
AT901-MR	opt.
AT901-LR	opt.
TDRA6000	
TM6100A	

575 848 **Reflectors for Fixed Installation (RFI) 0.5"**
Set of 5 pcs.
Ball with anodized aluminium surface,
ø 0.5" (12.07mm)
*Applied for: Robot and machine operations
dynamic and static measurements*



AT401	opt.
AT901-B	opt.
AT901-MR	opt.
AT901-LR	opt.
TDRA6000	
TM6100A	

573 510 **Cateye Reflector (CER)**
Ball with Hardened Steel Surface
ø 75mm (2.9528"), ±0.05mm



AT401	opt.
AT901-B	opt.
AT901-MR	opt.
AT901-LR	opt.
TDRA6000	
TM6100A	

575 847 **Surface Reflector Kit**
including: Surface Reflector with lanyard,
Pin Point Stylus, 3 mm Ruby Ball Stylus,
Edge Stylus, Initialisation Sphere and Manual



		Quantity	Radius	Centring of Optics	Shape Ball	Acceptance angle	Weight
Red-Ring Reflectors 1.5" (RRR)							
576 241	Red-Ring Reflector 1.5"	2 pcs.	19.05mm ±0.0025mm 0.7500 in ±0.00010 in	±0.006mm < ±0.00024 in	±0.0015mm < ±0.00006 in	±30°, no limitation due to ring	170g 6.00 oz
576 242	Red-Ring Reflector 1.5"	5 pcs.					
576 243	Red-Ring Reflector 1.5"	10 pcs.					
Red-Ring Reflectors 0.5" (RRR)							
576 238	Red-Ring Reflector 0.5"	2 pcs.	6.35mm ±0.0025mm 0.2500 in ±0.00010 in	< ±0.006mm < ±0.00024 in	±0.0015mm < ±0.00006 in	±30°, no limitation due to ring	6g 0.21 oz
576 239	Red-Ring Reflector 0.5"	5 pcs.					
576 240	Red-Ring Reflector 0.5"	10 pcs.					
Break Resistant Reflector 1.5" (BRR)							
576 244	Break Resistant Reflector 1.5"	1 pc.	19.05mm ±0.0025mm 0.7500 in ±0.00010 in	< ±0.010mm < ±0.0004 in	±0.0015mm < ±0.00006 in	≤ ±30°, no limitation due to collar	195g 6.88 oz
Tooling Ball Reflectors 0.5" (TBR)							
576 235	Tooling Ball Reflector 0.5"	5 pcs.	6.35mm ±0.004mm 0.2500 in ±0.00016 in	< ±0.01mm < ±0.00039 in	±0.003mm < ±0.00012 in	≤ ±22° (without ring: ≤ ±50°)	7g 0.25 oz
576 236	Tooling Ball Reflector 0.5"	10 pcs.					
Reflectors for Fixed Installation 0.5" (RFI)							
576 848	Reflectors for Fixed Installation 0.5"	5 pcs.	6.35mm 0.2500 in	not applicable	not applicable	±50°	3g 0.11 oz
576 246	Reflectors for Fixed Installation 0.5"	10 pcs.					
Cateye Reflector (CER)							
573 510	Cateye Reflector (CER)	1 pc.	75mm ±0.05mm 2.9528 in ±0.00197 in	±0.01mm ±0.00039 in	±0.01mm ±0.00039 in	±60°	730g 25.75 oz

Tape Target Reflector

AT401	opt.
AT901-B	
AT901-MR	
AT901-LR	
TDRA6000 TM6100A	

763 532 **GZM29, Reflective Tape, 20x20mm**

for short range, pack of 20 pieces

763 533 **GZM30, Reflective Tape, 40x40mm**

for mid range, pack of 20 pieces

763 534 **GZM31, Reflective Tape, 60x60mm**

for long range, pack of 20 pieces



AT401	opt.
AT901-B	
AT901-MR	
AT901-LR	
TDRA6000 TM6100A	

576 389 **CRT26 Circular Retro Target Tape**

outside \varnothing 26mm, central aperture \varnothing 5mm,
light orange, for medium range
pack of 100 pieces



AT401	opt.
AT901-B	
AT901-MR	
AT901-LR	
TDRA6000 TM6100A	

574 998 **Target-kit with retro-target on magnetic target, in case, comprising:**

20 ring-shaped retro-target, central aperture
 \varnothing 5mm, outside \varnothing 26mm (576 389)
20x Retro-Target, 20x20mm (635 317)
20x Retro-Target, 40x40mm (635 318)
4x RB Bases (575 776)
1x RBC Base (575 777)
4x RT3-90 Targets (575 773)
4x RT3-45 Targets (575 774)
4x RT3-0 Targets (575 775)



AT401	opt.
AT901-B	
AT901-MR	
AT901-LR	
TDRA6000 TM6100A	

575 773 **RT3-90 Tape Target**

with offset 30mm \pm 0.05mm, magnetic
fits to Target Base RB and RBC





575 774 **RT3-45 Tape Target**
with offset 30mm ± 0.05 mm, magnetic
fits to Target RB and RBC

AT401	opt.
AT901-B	
AT901-MR	
AT901-LR	
TDRA6000	
TM6100A	



575 775 **RT3-0 Tape Target**
with offset 30mm ± 0.05 mm, magnetic
fits to Target Base RB and RBC

AT401	opt.
AT901-B	
AT901-MR	
AT901-LR	
TDRA6000	
TM6100A	



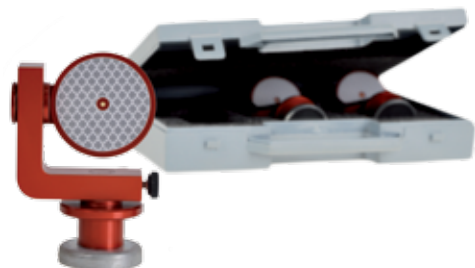
575 776 **RB Magnetic Target Base**
with offset 10mm ± 0.05 mm, magnetic
fits to Tape Targets RT3

AT401	opt.
AT901-B	
AT901-MR	
AT901-LR	
TDRA6000	
TM6100A	



575 777 **RBC Magnetic Target Base**
with offset 10mm ± 0.05 mm, fits to tape targets
RT3, with central bolt hole and locating pin

AT401	opt.
AT901-B	
AT901-MR	
AT901-LR	
TDRA6000	
TM6100A	



575 088 **Pass Point-Retro Target Set**
in case, comprising:
3 Swivel Targets with Retro Reflective Foils
 $\varnothing 45$ mm, h=75mm
3 Magnetic Bases

AT401	opt.
AT901-B	
AT901-MR	
AT901-LR	
TDRA6000	
TM6100A	

Special Reflectors and Holders
(Leica TDRA6000 only)

AT401	opt.
AT901-B	
AT901-MR	
AT901-LR	
TDRA6000 TM6100A	

575 940 **Roller Alignment Target Fixture**
comprising:
2 Floor Fixtures, 1 Roller Fixture, 2 RT3-90
Targets (575 773), 2 RT3-45 Targets (575 774),
excluding CCR 1.5" Reflector and CCR 1.5"
Supports



AT401	opt.
AT901-B	
AT901-MR	
AT901-LR	
TDRA6000 TM6100A	

574 999 **Hidden Point Bar, 0.5m**
with Tape Targets



AT401	opt.
AT901-B	
AT901-MR	
AT901-LR	
TDRA6000 TM6100A	

573 487 **Magnetic Support for Hidden Point Bar, 0.5m**



AT401	opt.
AT901-B	
AT901-MR	
AT901-LR	
TDRA6000 TM6100A	

641 662 **GMP101 Mini Prism Set**
incl. bubble, target plate and spike, in bag, also
suitable for GLS11 and GRT44 (same height as
GPH1, additive constant +17.5mm)



AT401	opt.
AT901-B	
AT901-MR	
AT901-LR	
TDRA6000 TM6100A	

555 631 **GPH1P Single Prism Precision Reflector**



Targets for Multiple
Theodolite Systems

571 549

Self-Adhesive Target Foils
black/white, ø 23mm, 48 pieces on one sheet



AT401	opt.
AT901-B	
AT901-MR	
AT901-LR	
TDRA6000	
TM6100A	

800 742

Scale Bar 0,9m
carbon fibre, incl. Producer Inspection
Certificate, in carrying case



AT401	opt.
AT901-B	
AT901-MR	
AT901-LR	
TDRA6000	
TM6100A	

574 681

Orientation Target
magnetic



AT401	opt.
AT901-B	
AT901-MR	
AT901-LR	
TDRA6000	
TM6100A	

575 854

Sphere Fit Tool
for Cateye Reflector



AT401	opt.
AT901-B	
AT901-MR	
AT901-LR	
TDRA6000	
TM6100A	

576 142

Light Duty Magnetic Holder
for Tooling Ball Reflectors 0.5"



AT401	opt.
AT901-B	
AT901-MR	
AT901-LR	
TDRA6000	
TM6100A	

Compensation and
Field Check Tools

AT401	opt. opt. opt.
AT901-B	
AT901-MR	
AT901-LR	
TDRA6000	
TM6100A	

- 575 479
- Compensation Set for 75mm Reflectors (Cateye)**
comprising:
575 415 Precision Ball Bar, Motorized
2 x 803 728 Magnetic Reflector Holder
575 090 Adapter to Ball Bar



AT401	opt. opt. opt.
AT901-B	
AT901-MR	
AT901-LR	
TDRA6000	
TM6100A	

- 575 480
- Compensation Set for 1.5" Red-Ring Reflectors (Corner Cube)**
comprising:
575 415 Precision Ball Bar, motorized
2 x 804 011 Magnetic Reflector Holder
575 090 Adapter to Ball Bar

AT401	opt. opt. opt.
AT901-B	
AT901-MR	
AT901-LR	
TDRA6000	
TM6100A	

- 575 415
- Precision Ball Bar, Motorized**
with counter weight, without reflector support



AT401	opt. opt. opt.
AT901-B	
AT901-MR	
AT901-LR	
TDRA6000	
TM6100A	

- 575 090
- Adapter to Ball Bar for Tripods with 5/8" Thread**
allows to mount a Ball Bar and a Magnetic Reflector Holder on a tripod, (Ball Bar and Reflector Holder are not included)



AT401	opt. opt. opt.
AT901-B	
AT901-MR	
AT901-LR	
TDRA6000	
TM6100A	

- 575 836
- IFM Distance Tool**
to re-determine the birdbath distance for TBR and 1.5" CCR Reflectors, 12mm bore holes for reflector supports (supports not included)





- 575 837
- Tripod Adapter**

to be used for various alignment or compensation measurements. Thread for tripod 5/8". Bore hole 12mm (supports not included)

 - Tripod reflector holder for consistent reference point
 - Drawn to scale
 - Steel with black oxide finish

AT401	opt.
AT901-B	opt.
AT901-MR	opt.
AT901-LR	opt.
TDRA6000	opt.
TM6100A	



- 575 484
- AT28 Aluminium Tripod**

with adjustable centre column. Robust, well-established tripod for general use and 5/8" thread. Suitable for Laser Stations, Theodolites and Laser Tracker field check equipment.

Instrument height: from 1.4 - 2.8m (4.6 - 9.2 ft)

Weight: 12kg (26.4 lb)

AT401	opt.
AT901-B	opt.
AT901-MR	opt.
AT901-LR	opt.
TDRA6000	opt.
TM6100A	



- 575 483
- AT21 Aluminium Tripod**

Robust, well-established tripod for general use and 5/8" thread. Suitable for Total Stations, Theodolites and Laser Tracker field check equipment.

Instrument height: from 1.4 -2.1m (4.6 - 6.9 ft)

Weight: 11kg (24.2 lb)

AT401	opt.
AT901-B	opt.
AT901-MR	opt.
AT901-LR	opt.
TDRA6000	opt.
TM6100A	



- 574 550
- Reference Tool Invar**

AT401	opt.
AT901-B	opt.
AT901-MR	opt.
AT901-LR	opt.
TDRA6000	opt.
TM6100A	



- 804 011
- Magnetic Reflector Holder**

for reflectors in spherical housings, ø 1.5" with bolt hole for 575 497

AT401	opt.
AT901-B	opt.
AT901-MR	opt.
AT901-LR	opt.
TDRA6000	opt.
TM6100A	

AT401	opt.
AT901-B	opt.
AT901-MR	opt.
AT901-LR	opt.
TDRA6000	
TM6100A	

803 728 **Magnetic Reflector Holder**
for reflectors in spherical housings, \varnothing 75mm with
bolt hole for 575 497 and 575 599.
- Tripod reflector holder for consistent reference
point
- Drawn to scale
- Steel with black oxide finish



AT401	opt.
AT901-B	opt.
AT901-MR	opt.
AT901-LR	opt.
TDRA6000	
TM6100A	

576 401 **Mirror Tool**
to measure distances between 2 points with Laser
Tracker using interferometer only. This basic set in-
cludes 2 holders with reflector holders for 0.5" and
1.5" (2 units each version 576 073 and 576 096).
This tool can be used also to generate nominal
distance values for the planned VDI/VDE standard



AT401	opt.
AT901-B	opt.
AT901-MR	opt.
AT901-LR	opt.
TDRA6000	
TM6100A	

576 402 **Reflector Mount**
which can be mounted on a tripod or fix installed
at a stabil location to establish nominal distances
for comparison measurements. To support 0.5" and
1.5" CCR's Magnetic Reflector Holders version
576 073 and 576 096 are recommended





1.5” Reflector Holders

- 577 011

Reflector Holder 1.5”
Offset 24mm, shank Ø 6mm, body Ø 25.4mm
stainless steel
- 577 002

Reflector Holder 1.5”
Offset 24mm, shank Ø 8mm, body Ø 25.4mm
stainless steel
- 577 003

Reflector Holder 1.5”
Offset 24mm, shank Ø 12mm, body Ø 25.4mm
stainless steel
- 577 101

Reflector Holder 1.5”
Offset 25mm, shank Ø 6mm, body Ø 25.4mm
stainless steel
- 577 102

Reflector Holder 1.5”
Offset 25mm, shank Ø 8mm, body Ø 25.4mm
stainless steel
- 577 103

Reflector Holder 1.5”
Offset 25mm, shank Ø 10mm, body Ø 25.4mm
stainless steel
- 577 104

Reflector Holder 1.5”
Offset 25mm, shank Ø 12mm, body Ø 25.4mm
stainless steel
- 577 120

Reflector Holder 1.5”
Offset 1.0000”, shank Ø 0.2500”, body Ø 1.000”
stainless steel

AT401	opt.
AT901-B	opt.
AT901-MR	opt.
AT901-LR	opt.
TDRA6000	opt.
TM6100A	

AT401
AT901-B
AT901-MR
AT901-LR
TDRA6000
TM6100A

opt.
opt.
opt.
opt.
opt.

- 577 125 **Reflector Holder 1.5"**
Offset 24mm, shankless, body Ø 40.64mm
stainless steel
- 577 126 **Reflector Holder 1.5"**
Offset 25mm, shankless, body Ø 40.64mm
stainless steel
- 577 127 **Reflector Holder 1.5"**
Offset 1.0000", shankless, body Ø 1.6000"
stainless steel
- 577 128 **Reflector Holder 1.5"**
Offset 24mm, shankless, body Ø 40.64mm
magnetic base, stainless steel
- 577 129 **Reflector Holder 1.5"**
Offset 25mm, shankless, body Ø 40.64mm
magnetic base, stainless steel
- 577 130 **Reflector Holder 1.5"**
Offset 1.0000", shankless, body Ø 1.6000"
magnetic base, stainless steel



Reflector Holders

Please send orders to: Hubbs Machine & Manufacturing Inc., 6282 Rocky Grove, P.O. Box 540, Cedar Hill, Missouri 63016-0540, USA, Phone +1 636 285 43 88, Fax +1 636 285 59 70, tonya@hubbsmachine.com



577 135 **Edge Reflector Holder 1.5"**
Offset 24mm, stainless steel



577 136 **Edge Reflector Holder 1.5"**
Offset 25mm, stainless steel



577 140 **Drift Nest 1.5"**
Offset 1.0000", aluminum



576 102 **Foundation Reflector Holder 1.5"**



576 134 **Tripod Reflector Holder 1.5"**

AT401	opt.
AT901-B	opt.
AT901-MR	opt.
AT901-LR	opt.
TDRA6000	opt.
TM6100A	

AT401	opt.
AT901-B	opt.
AT901-MR	opt.
AT901-LR	opt.
TDRA6000	opt.
TM6100A	

AT401	opt.
AT901-B	opt.
AT901-MR	opt.
AT901-LR	opt.
TDRA6000	opt.
TM6100A	

AT401	opt.
AT901-B	opt.
AT901-MR	opt.
AT901-LR	opt.
TDRA6000	opt.
TM6100A	

AT401
AT901-B
AT901-MR
AT901-LR
TDRA6000
TM6100A

opt.
opt.
opt.
opt.
opt.

- 576 104 **Leica Lanyard Set 1 (full)**
for safe handling of 1.5" reflectors



AT401
AT901-B
AT901-MR
AT901-LR
TDRA6000
TM6100A

opt.
opt.
opt.
opt.
opt.

- 576 105 **Leica Lanyard Set 2 (partial)**
for safe handling of 1.5" reflectors



Reflector Holders

Please send orders to: Hubbs Machine & Manufacturing Inc., 6282 Rocky Grove, P.O. Box 540, Cedar Hill, Missouri 63016-0540, USA, Phone +1 636 285 43 88, Fax +1 636 285 59 70, tonya@hubbsmachine.com



0.5" Reflector Holders

- 577 201

Reflector Holder 0.5"
Offset 10mm, shank Ø 5mm, body Ø 12.7mm
stainless steel
- 577 202

Reflector Holder 0.5"
Offset 10mm, shank Ø 6mm, body Ø 12.7mm
stainless steel
- 577 203

Reflector Holder 0.5"
Offset 10mm, shank Ø 8mm, body Ø 12.7mm
stainless steel
- 577 204

Reflector Holder 0.5"
Offset 10mm, shank Ø 10mm, body Ø 0.75"
stainless steel
- 576 068

Reflector Holder 0.5"
Offset 10mm, with Shank Ø 5mm
stainless steel
- 576 073

Reflector Holder 0.5"
Offset H 10mm, Magnetic Base
with Shank A Ø 10mm, stainless steel
- 577 205

Reflector Holder 0.5"
Offset 10mm, shank Ø 12mm, body Ø 0.75"
stainless steel
- 577 206

Reflector Holder 0.5"
Offset 12mm, shank Ø 6mm, body Ø 12.7mm
stainless steel
- 577 207

Reflector Holder 0.5"
Offset 12mm, shank Ø 8mm, body Ø 12.7mm
stainless steel
- 577 208

Reflector Holder 0.5"
Offset 12mm, shank Ø 12mm, body Ø 0.75"
stainless steel
- 577 209

Reflector Holder 0.5"
Offset 0.3125", shank Ø 0.2500"
body Ø 0.5000", stainless steel
- 577 210

Reflector Holder 0.5"
Offset 0.5000", shank Ø 0.2500"
body Ø 0.5000", stainless steel

AT401	opt.
AT901-B	opt.
AT901-MR	opt.
AT901-LR	opt.
TDRA6000	opt.
TM6100A	

AT401
AT901-B
AT901-MR
AT901-LR
TDRA6000
TM6100A

opt.
opt.
opt.
opt.
opt.

577 220 **Reflector Holder 0.5"**
Offset 10mm, body Ø 12.7mm, shankless,
magnetic base, stainless steel

577 221 **Reflector Holder 0.5"**
Offset 12mm, body Ø 12.7mm, shankless,
magnetic base, stainless steel

577 222 **Reflector Holder 0.5"**
Offset 0.5000", body Ø 0.5000", shankless,
magnetic base, stainless steel



AT401
AT901-B
AT901-MR
AT901-LR
TDRA6000
TM6100A

opt.
opt.
opt.
opt.
opt.

577 230 **Reflector Holder 0.5" Drift Nest**
Offset 0.5000", stainless steel



AT401
AT901-B
AT901-MR
AT901-LR
TDRA6000
TM6100A

opt.
opt.
opt.
opt.
opt.

577 235 **Reflector Holder 0.5" Target Corner**
Offset 0.5000", stainless steel



AT401
AT901-B
AT901-MR
AT901-LR
TDRA6000
TM6100A

opt.
opt.
opt.
opt.
opt.

577 240 **Magnetic Holder with Zero Thickness for 0.5" reflectors**
Steel black oxide finish



Reflector Holders

Please send orders to: Hubbs Machine & Manufacturing Inc., 6282 Rocky Grove, P.O. Box 540, Cedar Hill, Missouri 63016-0540, USA, Phone +1 636 285 43 88, Fax +1 636 285 59 70, tonya@hubbsmachine.com



- 576 131
- Double Vector for TBR**
 - Holds 2 0.5" reflectors on centreline and critical offsets to represent the centreline and direction of a hole
 - Drawn to scale
 - Centring and height tolerance within 0.0127mm (0.0005")
 - Steel with black oxide finish

AT401	opt.
AT901-B	opt.
AT901-MR	opt.
AT901-LR	opt.
TDRA6000	
TM6100A	



- 576 052
- Heavy Duty Magnetic Holder for TBR**
for tooling ball reflectors 0.5"

AT401	opt.
AT901-B	opt.
AT901-MR	opt.
AT901-LR	opt.
TDRA6000	
TM6100A	

Miscellaneous



- 576 055
- Heavy Duty Magnetic Reflector Holder Adaptor**
for supports with shank Ø 12mm

AT401	opt.
AT901-B	opt.
AT901-MR	opt.
AT901-LR	opt.
TDRA6000	
TM6100A	



- 576 122
- Foundation Target Insert**
 - Mounts to concrete floor foundations for permanent targeting reference
 - Drawn to scale

AT401	opt.
AT901-B	opt.
AT901-MR	opt.
AT901-LR	opt.
TDRA6000	
TM6100A	

AT401
AT901-B
AT901-MR
AT901-LR
TDRA6000
TM6100A

opt.

577 255

1.5" Laser Station Sphere

A 1.5" Sphere for 3D manual sighting applications



AT401
AT901-B
AT901-MR
AT901-LR
TDRA6000
TM6100A

opt.
opt.
opt.
opt.

577 259

1.5" to 0.5" Adapter

To be able to use a 0.5" reflector in a 1.5" nest



Reflector Holders

Please send orders to: Hubbs Machine & Manufacturing Inc., 6282 Rocky Grove, P.O. Box 540, Cedar Hill, Missouri 63016-0540, USA, Phone +1 636 285 43 88, Fax +1 636 285 59 70, tonya@hubbsmachine.com



577 250

Leica Geosystems Laser Tracker – Imperial Reflector Holder Kit

Consisting of:

- 3 x 577 230 Reflector Holder 0.5" Drift Nest, offset 0.5000", stainless steel
- 1 x 577 235 Reflector Holder 0.5" Target Corner, offset 0.5000", stainless steel
- 1 x 577 210 Reflector Holder 0.5", offset 0.5000", shank Ø 0.2500", body Ø 0.5000", stainless steel
- 1 x 576 131 Double Vector for TBR, shank Ø 0.2500", steel black oxide finish
- 1 x 577 120 Reflector Holder 1.5", offset 1.0000", shank Ø 0.2500", Body Ø 1.000", stainless steel
- 1 x 577 127 Reflector Holder 1.5", offset 1.0000", shankless, body Ø 1.6000", stainless steel
- 1 x 577 137 Edge Reflector Holder 1.5", offset 1.0000", stainless steel
- 2 x 576 134 Tripod Reflector Holder 1.5"
- 6 x 577 140 Drift Nest 1.5", offset 1.0000", aluminum

AT401
AT901-B
AT901-MR
AT901-LR
TDRA6000
TM6100A

opt.
opt.
opt.
opt.
opt.

AT401
AT901-B
AT901-MR
AT901-LR
TDRA6000
TM6100A

opt.
opt.
opt.
opt.
opt.

577 251

Leica Geosystems Laser Tracker – Metric Reflector Holder Kit

Consisting of:

- 3 x 577 221 Reflector Holder 0.5", offset 12mm, body Ø 12.7mm, shankless, magnetic base, stainless steel
- 1 x 577 202 Reflector Holder 0.5", offset 10mm, shank Ø 6mm, body Ø 12.7mm, stainless steel
- 1 x 577 203 Reflector Holder 0.5", offset 10mm, shank Ø 8mm, body Ø 12.7mm, stainless steel
- 1 x 577 205 Reflector Holder 0.5", offset 10mm, shank Ø 12mm, body Ø 12.7mm, stainless steel
- 1 x 577 206 Reflector Holder 0.5", offset 12mm, shank Ø 6mm, body Ø 12.7mm, stainless steel
- 1 x 577 207 Reflector Holder 0.5", offset 12mm, shank Ø 8mm, body Ø 12.7mm, stainless steel
- 1 x 577 208 Reflector Holder 0.5", offset 12mm, shank Ø 12mm, body Ø 12.7mm, stainless steel
- 1 x 577 101 Reflector Holder 1.5", offset 25mm, shank Ø 6mm, body Ø 25.4mm, stainless steel
- 1 x 577 102 Reflector Holder 1.5", offset 25mm, shank Ø 8mm, body Ø 25.4mm, stainless steel
- 1 x 577 104 Reflector Holder 1.5", offset 25mm, shank Ø 12mm, body Ø 25.4mm, stainless steel
- 1 x 577 126 Reflector Holder 1.5", offset 25mm, shankless, body Ø 40.6mm, stainless steel
- 1 x 577 136 Edge Reflector Holder 1.5", offset 25mm, stainless steel
- 2 x 576 134 Tripod Reflector Holder 1.5"
- 6 x 577 140 Drift Nest 1.5", offset 1.0000", aluminum



Reflector Holders

Please send orders to: Hubbs Machine & Manufacturing Inc., 6282 Rocky Grove, P.O. Box 540, Cedar Hill, Missouri 63016-0540, USA, Phone +1 636 285 43 88, Fax +1 636 285 59 70, tonya@hubbsmachine.com

Leica TM6100A Industrial Theodolite

576 372

Leica TM6100A Motorized Industrial Theodolite

with pan focal telescope and build-in autocollimation eyepiece.
Including user manual, upright container and Producer Inspection
Certificate M (angle).



Leica TDRA6000 Laser Station

576 373 **Leica TDRA6000 Motorized Industrial Laser Station**

with automatic target recognition, Power Search, and reflectorless EDM. Dual face industrial keyboard and large illuminated display. Compartment for internal battery and memory card, two-axes compensator, motor controlled slow motion drives for Hz and V settings, friction coupling, optical sight in both faces. Including user manual, upright container and Producer Inspection Certificate M, angle and distances with both reflector and reflectorless EDM. (1.5"RRR, Retro-Reflective Tape).



Additional Options



769 992 **GTS23 V2 Optional 2nd Keyboard**
with touch screen and color display, for Leica
TM6100A instruments, for telescope position 2
(factory fitted)

AT401	opt.
AT901-B	
AT901-MR	
AT901-LR	
TDRA6000	
TM6100A	



6003 628 **TDRA6000 Accessory Set**
Consisting of: GDF21-I, Industrial Tribrach w/o
opt. Plummets, 2 GEB241 Batteries, GKL221
Charger with 2 GDI221 Charging Adapters,
MCF256 CompactFlash Card 256MB, GEV218
Data Transfer Cable Lemo 1 / USB

AT401	opt.
AT901-B	
AT901-MR	
AT901-LR	
TDRA6000	
TM6100A	

Power Supply

AT401	opt.
AT901-B	
AT901-MR	
AT901-LR	
TDRA6000	opt.
TM6100A	opt.

754 834 **GEB241 Battery**
Internal battery, Li-Ion 14.8V, 4800mAh



AT401	
AT901-B	
AT901-MR	
AT901-LR	
TDRA6000	opt.
TM6100A	opt.

727 367 **GEB171 External Battery**
12V 9Ah, Ni-MH, rechargeable



AT401	
AT901-B	
AT901-MR	
AT901-LR	
TDRA6000	opt.
TM6100A	opt.

749 279 **GEV208 Power Supply Unit**
for TPS/GPS, for indoor use only.
Input 100-240VAC to output 12VDC,
with connection for Power Cables



AT401	
AT901-B	
AT901-MR	
AT901-LR	
TDRA6000	opt.
TM6100A	opt.

575 427 **T_LINK Interface**
Power supply unit for TPS, for indoor use only.
Input 94-265VAC to output 12VDC
(max. 8 instruments)



Battery Chargers



733 271 **GKL221 Charger PRO**
To be used with up to two charging adapt-
ers GDI221 or GDI222, Charger cable and net
adapter included

AT401	opt.
AT901-B	
AT901-MR	
AT901-LR	
TDRA6000	opt.
TM6100A	opt.



733 323 **GDI221 Adapter for GKL221**
for charging Li-Ion batteries of type GEB241

AT401	opt.
AT901-B	
AT901-MR	
AT901-LR	
TDRA6000	opt.
TM6100A	opt.

Data Storage and Data Transfer



733 257 **MCF256 Compact Flash Card**
256MB

AT401	
AT901-B	
AT901-MR	
AT901-LR	
TDRA6000	opt.
TM6100A	opt.

745 995 **MCF1000 Compact Flash Card**
1GB



733 258 **MCFAD1 Compact Flash PC Card Adapter**

AT401	
AT901-B	
AT901-MR	
AT901-LR	
TDRA6000	opt.
TM6100A	opt.



776 240 **MCR8 CF/SD/SRAM Card Reader**
USB card reader for SD/CF and SRAM cards

AT401	
AT901-B	
AT901-MR	
AT901-LR	
TDRA6000	opt.
TM6100A	opt.

Power Cables

AT401	opt. opt.
AT901-B	
AT901-MR	
AT901-LR	
TDRA6000	
TM6100A	

576 390 **GEV86-I Data Cable, 20m**
connects instrument with external power
supply T_Link/GEV208 or battery GEB171



AT401	opt. opt.
AT901-B	
AT901-MR	
AT901-LR	
TDRA6000	
TM6100A	

758 469 **GEV219 Power Cable, 1.8m**
Connects external battery GEB171 to
TM30/TS30 or Leica TDRA6000 instrument



AT401	opt. opt.
AT901-B	
AT901-MR	
AT901-LR	
TDRA6000	
TM6100A	

759 257 **GEV220 Y-Cable, 2.0m**
Connects TM30/TS30 or Leica TDRA6000 to PC
(9-pin RS232 serial) and external battery



AT401	opt. opt.
AT901-B	
AT901-MR	
AT901-LR	
TDRA6000	
TM6100A	

800 497 **Cable Spool**
for 20m/40m cables
(without cable)



Data Transfer Cables
and Converter



733 282 **GEV162 Data Transfer Cable, 2.8m**
Connects GPS1200+ receiver RX controller
port
or Leica TM30/TS30 or Leica TDRA6000
to PC for data transfer, firmware upload etc.
lemo to 9 pin RS232 serial connector

AT401	opt. opt.
AT901-B	
AT901-MR	
AT901-LR	
TDRA6000 TM6100A	



758 468 **GEV218 Serial Data Transfer Cable, 2.0m**
Converter cable USB to serial (Lemo to USB
A connector), connects instrument to PC, PC
driver included on CD

AT401	opt. opt.
AT901-B	
AT901-MR	
AT901-LR	
TDRA6000 TM6100A	



758 513 **Adapter Cable Leica TPS6000**
(Lemo 0 - Lemo 1), Used to convert Leica
TPS5000 cables. Used to work with TPS6000
sensors on existing Leica TPS5000 cables

AT401	opt. opt.
AT901-B	
AT901-MR	
AT901-LR	
TDRA6000 TM6100A	



576 388 **RS232 Serial – USB Adapter**
Used to convert 9-pin RS232 connectors into
USB connections

AT401	opt. opt.
AT901-B	
AT901-MR	
AT901-LR	
TDRA6000 TM6100A	



707 525 **GK1 Lemo Canon Converter**
30°, for PC

AT401	opt. opt.
AT901-B	
AT901-MR	
AT901-LR	
TDRA6000 TM6100A	

Tripods

AT401	opt.
AT901-B	
AT901-MR	
AT901-LR	
TDRA6000	opt.
TM6100A	opt.

296 632 **GST20 Tripod Telescopic, with accessories**
Robust, well-established tripod for general use. Suitable for levels, lasers, Laser Stations and GPS. Extendible 180cm (5.9ft)
Weight: 6.4kg (14.1lb)



AT401	opt.
AT901-B	
AT901-MR	
AT901-LR	
TDRA6000	opt.
TM6100A	opt.

332 200 **GST4 Tripod Base**
for setting up GST Tripods on smooth surfaces



AT401	opt.
AT901-B	
AT901-MR	
AT901-LR	
TDRA6000	opt.
TM6100A	opt.

575 483 **AT21 Aluminum Tripod**
Robust, well-established tripod for general use and 5/8" thread. Suitable for Laser Stations, Theodolites and Laser Tracker field check equipment. Instrument height: from 1.4 – 2.1m (4.6 – 6.9 ft)
Weight: 11kg (24.2 lb)



AT401	opt.
AT901-B	
AT901-MR	
AT901-LR	
TDRA6000	opt.
TM6100A	opt.

575 484 **AT28 Aluminum Tripod**
with adjustable centre column. Robust, well-established tripod for general use and 5/8" thread. Suitable for Laser Stations, Theodolites and Laser Tracker field check equipment. Instrument height: from 1.4 - 2.8m (4.6 - 9.2 ft)
Weight: 12kg (26.4 lb)





417 677 **GMT5 Measuring Slide**
(Single direction) with maximum working range
40mm; least count 0.01mm

AT401	opt. opt.
AT901-B	
AT901-MR	
AT901-LR	
TDRA6000 TM6100A	



417 678 **GAD12 Adapter Set**
for mounting GMT5 translation stage onto any
Leica Geosystems tribrach; includes tribrach
to mount instrument; typical adapter set for
Theodolites and Laser Stations

AT401	opt. opt.
AT901-B	
AT901-MR	
AT901-LR	
TDRA6000 TM6100A	



417 679 **GAD13 Adapter Set**
for mounting GMT5 translation stage onto 5/8"
thread; includes adapter plate with 5/8" thread
to mount instruments; typical adapter set for
levels

AT401	opt. opt.
AT901-B	
AT901-MR	
AT901-LR	
TDRA6000 TM6100A	

Tibrachs

AT401	opt.
AT901-B	
AT901-MR	
AT901-LR	
TDRA6000	opt.
TM6100A	opt.

575 459 **GDF21-I Industrial Tribach**
without optical plummet, light grey



AT401	opt.
AT901-B	
AT901-MR	
AT901-LR	
TDRA6000	opt.
TM6100A	opt.

575 733 **GDF22-I Industrial Tribach**
with optical, plummet, light grey



AT401	opt.
AT901-B	
AT901-MR	
AT901-LR	
TDRA6000	opt.
TM6100A	opt.

577 261 **3½" x 8" to 5/8" x 11" Adapter**
to mount a TPS or Leica AT401 sensor on a heavy duty "Brunson"
type stand

Please send orders for Art. 577 261 to:
Hubbs Machine & Manufacturing Inc., 6282 Rocky Grove, P.O. Box 540, Cedar Hill,
Missouri 63016-0540, USA
Phone +1 636 285 43 88, Fax +1 636 285 59 70, tonya@hubbsmachine.com



Eyepieces, Filtes, DL2 Lasers and Autocollimation Accessories



308 838 **FOK53 Eyepiece**
44 x magnification at 10m/30ft, optically adjusted and fitted in factory (only to be ordered with new instrument)

AT401	
AT901-B	
AT901-MR	
AT901-LR	
TDRA6000	opt.
TM6100A	opt.



743 504 **GV013 Objective Sun-Filter**

AT401	
AT901-B	
AT901-MR	
AT901-LR	
TDRA6000	opt.
TM6100A	opt.



734 514 **GFZ3 Diagonal Eyepiece**
for telescope, except T100

AT401	
AT901-B	
AT901-MR	
AT901-LR	
TDRA6000	opt.
TM6100A	opt.



376 236 **GOK6 Eyepiece**
for steep sights, with joint allowing variable sighting angle

AT401	
AT901-B	
AT901-MR	
AT901-LR	
TDRA6000	opt.
TM6100A	opt.



723 231 **Counterweight for Leica TM5100A/TM6100A**
if steep angle GOK6 Eyepiece is attached

AT401	
AT901-B	
AT901-MR	
AT901-LR	
TDRA6000	
TM6100A	opt.

AT401
AT901-B
AT901-MR
AT901-LR
TDRA6000
TM6100A

opt.

- 433 472 **GUS29 Internal Target**
for collimation measurements
(Factory fit to Leica TM5100A / Leica TM6100A)



AT401
AT901-B
AT901-MR
AT901-LR
TDRA6000
TM6100A

opt.

- 575 871 **Passive Adapter Plate**
For Leica TM5100, Leica TM5100A and Leica TM6100A
without power supply (factory fit)



Autocollimation Accessories

AT401
AT901-B
AT901-MR
AT901-LR
TDRA6000
TM6100A

opt.

- 199 899 **GOA2 Autocollimation Eyepiece**
(Leica TDRA6000 only)



AT401
AT901-B
AT901-MR
AT901-LR
TDRA6000
TM6100A

opt.

- 394 787 **GEB62 Plug-In Lamp**
with cable to battery
(Leica TDRA6000 only)



AT401
AT901-B
AT901-MR
AT901-LR
TDRA6000
TM6100A

opt.

- 394 792 **GEB63 Battery Box**
for autocollimation eyepiece and eyepiece lamp.
Does not include 9V battery
(Leica TDRA6000 only)





575 725 **AL51 Plug in Lamp**
Leica TM5100A/TM6100A

AT401	
AT901-B	
AT901-MR	
AT901-LR	
TDRA6000	
TM6100A	opt.



392 368 **GAS1 Autocollimation Mirror**
ø 50mm, in case

AT401	
AT901-B	
AT901-MR	
AT901-LR	
TDRA6000	
TM6100A	opt.



574 822 **DL2 Diode Laser Eyepiece**
with user manual, in case

AT401	
AT901-B	
AT901-MR	
AT901-LR	
TDRA6000	
TM6100A	opt.



723 231 **Counterweight for Leica TM6100A**
if Diode Laser DL2/3 is attached

AT401	
AT901-B	
AT901-MR	
AT901-LR	
TDRA6000	
TM6100A	opt.



574 835 **Intensity Regulator for DL/3**

AT401	
AT901-B	
AT901-MR	
AT901-LR	
TDRA6000	
TM6100A	opt.

AT401	opt. opt.
AT901-B	
AT901-MR	
AT901-LR	
TDRA6000	
TM6100A	

575 498 **Tripod Bracket**
In order to attach accessories (Battery, DL2 Intensity Regulator, Radio Modem) to AT21/28 Tripods



Cables

AT401	opt.
AT901-B	
AT901-MR	
AT901-LR	
TDRA6000	
TM6100A	

574 834 **Cable 1m**
connects DL2 and Intensity Regulator



AT401	opt.
AT901-B	
AT901-MR	
AT901-LR	
TDRA6000	
TM6100A	

409 678 **GEV52 Data Cable 1.8m**
connects instrument or intensity regulator DL2 with External Power Supply T_LINK/GEV208 or Battery GEB70/171



AT401	opt.
AT901-B	
AT901-MR	
AT901-LR	
TDRA6000	
TM6100A	

527 497 **GEV86 Data Cable 20 m**
connects DL2/3 intensity regulator with external power supply T_LINK/GEV208 or Battery GEB171

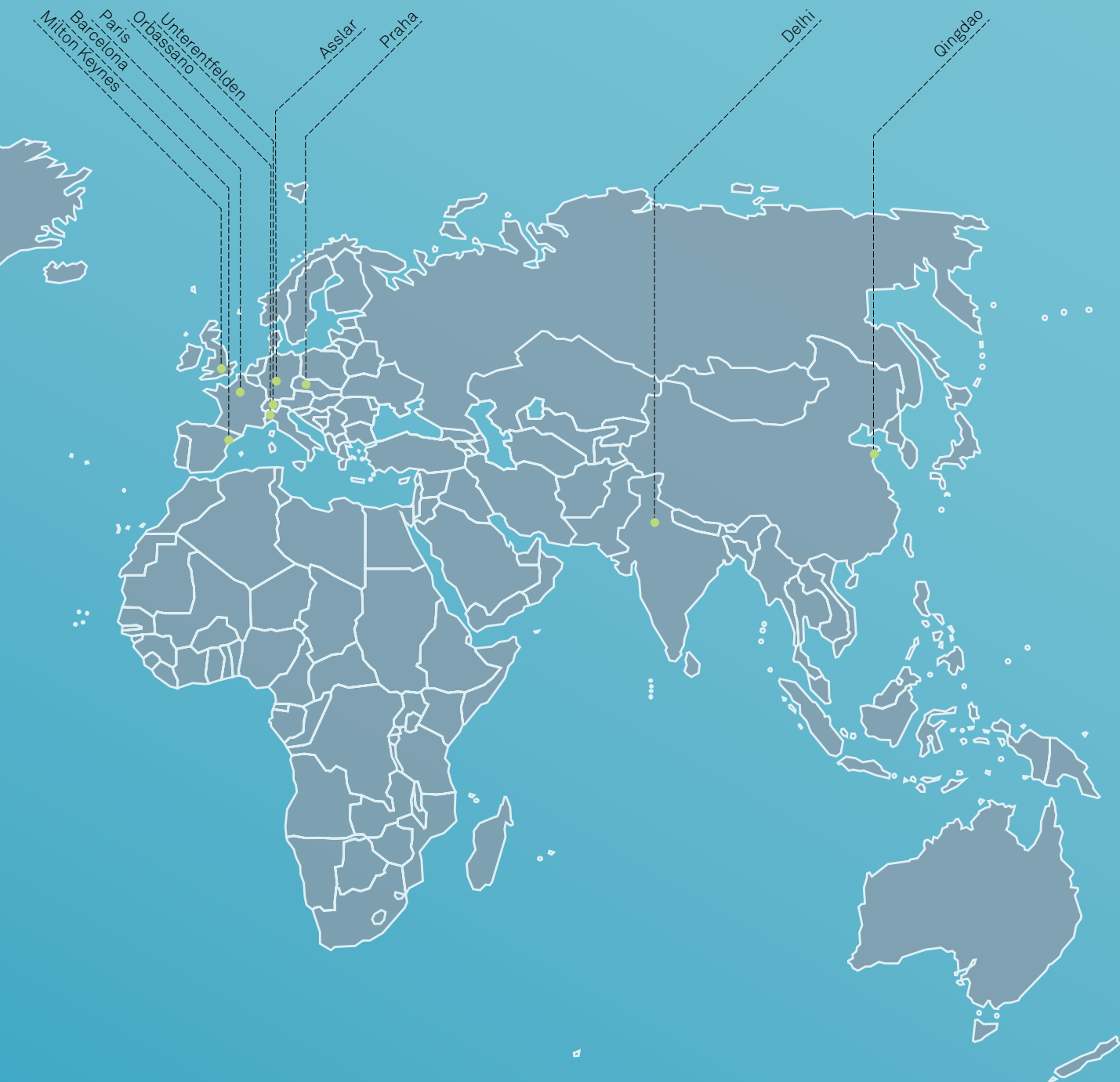


AT401	opt.
AT901-B	
AT901-MR	
AT901-LR	
TDRA6000	
TM6100A	

576 387 **GEV63-I Power Cable 1.2m**
connects instrument with DL2/3 Intensity Regulator









HEXAGON
METROLOGY

www.hexagonmetrology.com







HEXAGON
METROLOGY

Hexagon Metrology offers a comprehensive range of products and services for all industrial metrology applications in sectors such as automotive, aerospace, energy and medical. We support our customers with actionable measurement information along the complete life cycle of a product – from development and design to production, assembly and final inspection.

With more than 20 production facilities and 70 Precision Centers for service and demonstrations, and a network of over 100 distribution partners on five continents, we empower our customers to fully control their manufacturing processes, enhancing the quality of products and increasing efficiency in manufacturing plants around the world.

For more information, visit

www.hexagonmetrology.com

Hexagon Metrology is part of Hexagon (Nordic exchange: HEXA B). Hexagon is a leading global provider of design, measurement and visualisation technologies that enable customers to design, measure and position objects, and process and present data.

Learn more at

www.hexagon.com

© 2013 Hexagon Metrology. Part of Hexagon

All rights reserved. Due to continuing product development, Hexagon Metrology reserves the right to change product specifications without prior notice.

Printed in Germany. February 2013